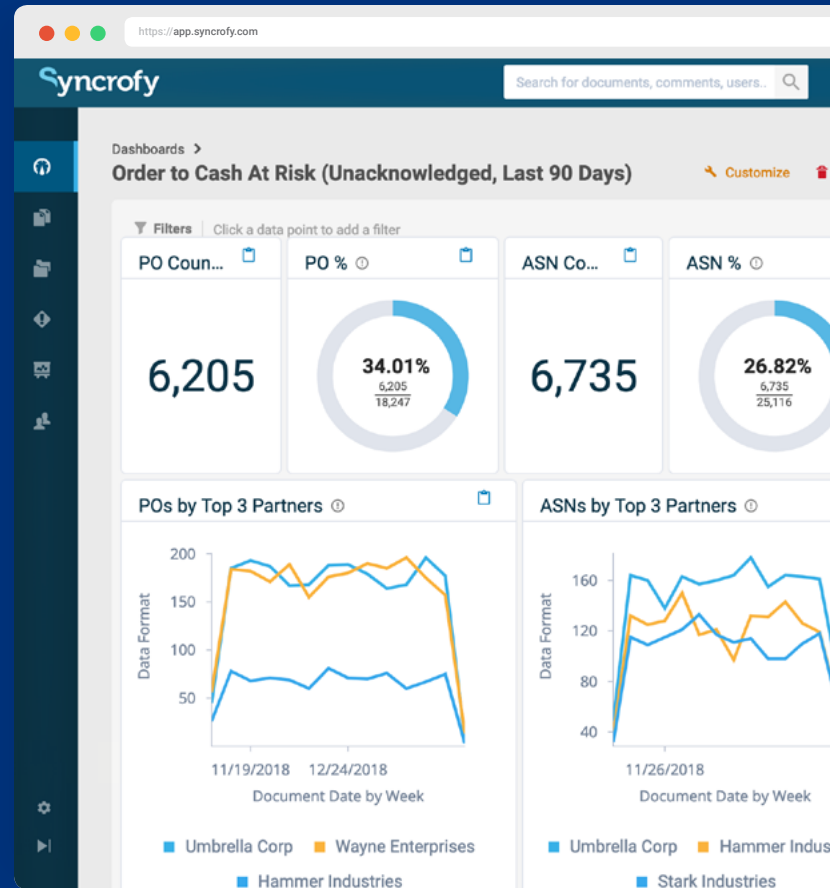




Full data visibility made easy

Syncrofy provides business users with easy and configurable self-service access to EDI data without the need for IT support. Customizable dashboards and reports allow you to see all of your data in a searchable, easy-to-read format. Syncrofy's real-time monitoring ensures you're working with the most recent data, enabling you to make quick, accurate decisions.



Real-time monitoring

Syncrofy delivers up-to-the-minute business data, and reflects changes immediately within the system — allowing you to be proactive when it comes to monitoring business trends, managing key priorities, and building transparency within your organization. Up-to-the-minute data helps provide a true view of your business, empowering you to gain faster insights and make more well-formed decisions.



Dynamic, detailed reporting

With Syncrofy's Reports feature, you can create detailed reports to help you gain greater visibility into your entire operation. Because Syncrofy displays data in real-time, your reports will be based on the most accurate information available. You can download and share reports, as well as create dashboards for fast and easy collaboration of key business information with your team and partners.



View the data most important to you

Dashboards allow you to view the overall health of your business and an overview of your entire operation. You can discover how critical information impacts your bottom line and view past performance, patterns, and future opportunities. Build multiple dashboards and share them with your partners to compare information and collaborate with your partners and other users.



Self-service access to data

Syncrofy allows you to view and analyze EDI data from your web browser and search for data by partner, transaction, or a range of other criteria. You can also format and customize report templates on your own, ensuring you get the data you need, when you need it—without having to wait for IT assistance. No more engaging your business intelligence team for help with formatting a report or dashboard.