

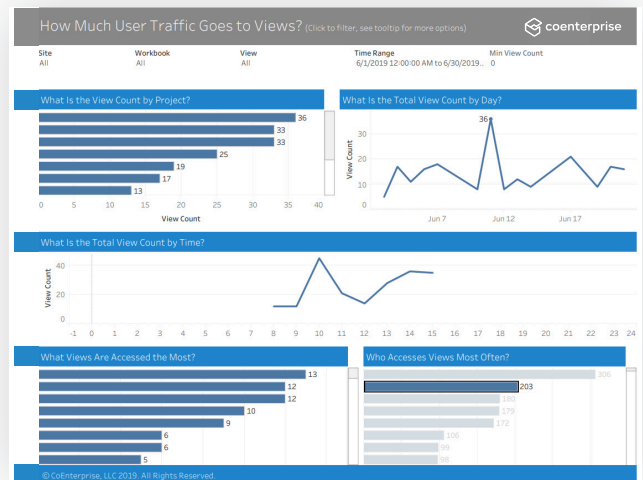
COENTERPRISE TABLEAU SERVER HEALTH CHECK

Be proactive with your system, not reactive.

At CoEnterprise, we realize how important understanding your data is to your business. That's why our passionate team of experts are here to help you get the most out of your Tableau investment so you can meet and exceed your business goals.

What is a Tableau Server Health Check?

We understand that your business depends on how quickly you can deliver information. That's why it's important to ensure your system is running at optimal efficiency. A Tableau Server Health Check is a detailed evaluation of your server environment and the resulting report will help to identify and mitigate risk to your system before major problems arise.



Successfully completed server health checks with hundreds of customers



Award-winning Gold Partner working in direct collaboration with Tableau management



Top providers of dashboard design, server implementation, and best practices/training



Over 1K custom data visualizations implemented

Why Have One Performed?

It allows your team and system to be evaluated by a neutral, third party to identify strengths, potential areas for improvement, and recommendations on changes moving forward that will allow you to get the most out of your deployment.

Technical Requirements

A Tableau administrator or member of your IT department with access to the following:

Tableau Desktop

Postgres Database

Log file

Should this be the right team to help improve performance?

Our dedicated professionals help drive customer engagement retention rates of over 75% — more than double our competitors

What's the Investment?

The preliminary report is provided at no cost to you.

We're the Right Choice for Your Team to Help Improve and Maintain Performance

It's our unique and customized approach to each customer that has solidified our reputation in the field, helping customers improve and optimize platform performance to ensure you're getting the most out of your data. Our 39 point Health Check inspects key areas of your Tableau deployment evaluating the Tableau environment, configuration, security, usage, etc.

About CoEnterprise

CoEnterprise's proficiency extends well beyond the technical. All of our Tableau practice leaders are also business experts with decades of practical hands-on experience at industry-leading consulting firms. It is CoEnterprise's unique blend of technical expertise and management consulting that helps us ensure that our projects are delivered on-time, within budget, and with the utmost attention to our customers' needs.

